

Yarns 'n Prayers



St. Giles Prayer Shawl Ministry

News from the 1st Quarter, 2024

Attention Prayer Shawl Ministry,
Thank you so much for
your donation of 20
hand-knit ~~hats~~ ^{hats} to my school,
Patrick Henry Elementary
in Irving Park. Our
school has received an influx
of newcomers from Venezuela,
among other countries. Many
of them have no other
way to obtain winter clothes,
so our school clothing drive
and your donation are invaluable
in helping them through their
first Chicago winter. Sincerely,
Mia Meister

Prayer Shawl Ministry meeting dates in 2024

The 2nd Monday of each month

1st Qtr • Feb. 12, Mar. 11

2nd Qtr • Apr. 8, May 13, Jun. 10

3rd Qtr • Jul. 8, Aug. 12, Sept. 9

4th Qtr • Oct. 14, Nov. 11, Dec. 9

To confirm a particular meeting date, contact

Paul Joseph Schleitwiler, FCM at

pjschleitwilerfcm@yahoo.com

1- Do you know someone in need of our community's prayers?

You may not be able to make things to carry our prayers to those in need, but, if you know of someone who needs our prayers, you can get a shawl, blanket or other item from the Parish Center and give it to that person. If you can't physically do that, call the Parish Center with your information about where and to whom and why to send something and ask that it be passed to some one of us who can do it.

2- There is no charge for this

but donations of yarn, or money to buy yarn, are appreciated to carry on this ministry.

3- Do you knit or crochet or sew or weave and would you like to participate in this ministry?

We gather at the Parish Ministry Center on the second Monday of each month at 1 PM to bless and record new shawls and blankets, share patterns and ideas, and get yarn for new projects. Attendance is not required. You can join this ministry by making at least one shawl or lap blanket. If you need yarn to do this, you can get some from our stash. Send your contact info to Paul Joseph Schleitwiler, FCM to be added to the roster

4- Do you have a story to share about prayer shawls or blankets?

Or other things related to this ministry or the making of shawls and blankets? Did something in this newsletter inspire you to comment about it?

Share what you have to say by email to

pjschleitwilerfcm@yahoo.com

What More Can I Do?

Your prayers for those who receive these tangible signs of our care and God's love are the heart of this ministry.

Page 2 - Who We Are Praying For
Thank you, Blessing & Statistics

Page 3 - Slip Stitch Prayer Shawl

Page 4, 5 - Summer Meadow Motif Shawl

Who We Are Praying For

Four nursing home residents
An aunt and a cousin of a parishioner
The mother of a parishioner
A woman for surgery
Two hospitalized women
A neighbor with cancer
A friend for overall health
A neighbor with pain from a back condition
A woman with back, knee and eye problems
A grandmother with cancer
A man with foot surgery from diabetes
Another woman with cancer
A woman for brain surgery
A woman in hospice
A man for cancer
A woman for a heart attack
A woman for knee surgery
A man in hospice
Two women who each lost her son
A woman whose brother died
Another woman with cancer
An ailing woman
Another woman with cancer
A woman with a blood disease
Another woman with cancer
A man with an auto immune disease
A man for surgery from bladder cancer
A man whose mother is ill
A woman whose brother died days after she bore a new baby
The brother of one of our crafters

*Thank you very much for the beautiful Prayer -
Blanket which was given to me by Nancy Hoel.
Thank you for the kind words & Prayer it was
much appreciated. Sincerely
#50.00
Marvia Prangen*

Statistics for the Quarter

Crafters made 39 shawls, 3 blankets, 12 hats and 5 scarves this quarter.
People in need of our prayers received 46 shawls and 2 blankets.
Whether we make something or just pray for those in need, our whole community participates in this ministry for all those people who have received a shawl, a blanket, a blessing square or other item our crafters have made.



Blanket by Paula Laboe

Our Blessing for Shawls and Lap Blankets

(adapted from Janet Severi Bristow - 2000)

May God's grace be upon these shawls and blankets ...
warming, comforting, enfolding and embracing.

May these mantles be a safe haven ...

a sacred place of security and well being ...

sustaining and embracing in good times as well as difficult ones.

May those who receive these shawls and blankets be cradled in hope,
kept in joy, graced with peace,
and wrapped in love.

Blessed be!

If you knit, crochet, sew or weave join us in the Prayer Shawl ministry.

Currently crafters are making shawls and lap blankets by knitting or crocheting but if you quilt or weave, you could also contribute blankets and shawls.

When you have finished a project, the leftover yarn can be used to make blessing squares.

Slip Stitch Prayer Shawl

Difficulty level: ** Easy Free Shawl Knitting Pattern
Introducing the Slip Stitch Prayer Shawl, a rectangular shawl designed for ease and elegance. This pattern combines garter stitch with slip stitches and two contrasting yarns, resulting in a striking geometric design. Whether you're crafting it for yourself or a loved one, this shawl offers both comfort and style.

Skills Required/Techniques Used:

- Knit, cast on & bind off
- Slip stitch

Finished measurements: 72" x 19" (180 cm x 48 cm)

Materials: aran weight yarn, 197 yd (180 m) / 85g, Color A - 3 balls. (DC), Color B - 3 balls. (LC) = 1,182 yd

Needles: US #8 (5.0 mm) circular needles 40" long.

Gauge: 16 sts x 32 rows = 4" x 4" (10 cm x 10 cm) in garter st.

Abbreviations: k - knit; sl wyib - slip st with yarn in back; sl wyif - slip st with yarn in front; DC - dark color; LC - light color; RS - right side; WS - wrong side

Pattern Notes:

Garter st in rows: all rows knit

Chain Selvedge: the selvedge/edge stitches are worked as follows: slip the first stitch purlwise and knit the last one.

Short Overview of the Pattern:

The shawl is worked in garter stitch using 2 contrast yarns, with geometric pattern created by slip stitches.

Shawl

With DC, cast on 83 sts and knit 1 foundation row.

Row 1 (RS): Using LC yarn, knit. (83 sts)

Row 2 (WS): Using LC yarn, sl, k82.

Row 3: Using DC yarn, sl, k82.

Row 4: Using DC yarn, sl, k82.

Repeat rows 1-4 two more times

Row 13: Using LC yarn, sl, k6, (sl wyib, k1) x 2 times, sl wyib, k11, ((sl wyib, k1) x 2 times, sl, k11) x 3 times, (sl wyib, k1) x 2 times, sl wyib, k7. (83 sts)

Row 14: Using LC yarn, sl, k6, (sl wyif, k1) x 2 times, sl wyif, (k11, (sl wyif, k1) x 2 times, sl wyif) x 3 times, k11, (sl wyif, k1) x 2 times, sl wyif, k7.

Row 15: Using DC yarn, sl, k6, (sl wyib, k1) x 2 times, sl wyib, k11, ((sl wyib, k1) x 2 times, sl wyib, k11) x 3 times, (sl wyib, k1) x 2 times, sl wyib, k7.

Row 16: Using DC yarn, sl, k6, (sl wyif, k1) x 2 times, sl wyif, (k11, (sl wyif, k1) x 2 times, sl wyif) x 3 times, k11, (sl wyif, k1) x 2 times, sl wyif, k7.

Row 17: Using LC yarn, repeat row 13.

Row 18: Using LC yarn, repeat row 14.

Rows 19-20: Using DC yarn, sl, k82. (83 sts)

Rows 21-22: Using LC yarn, sl, k82.

Rows 23-24: Using DC yarn, repeat rows 19-20.

Row 25: Using LC yarn, sl, k14, ((sl wyib, k1) x 2 times, sl wyib, k11) x 3 times, (sl wyib, k1) x 2 times, sl wyib, k15. (83 sts)

Row 18: Using LC yarn, sl, k14, (sl wyif, k1) x 2 times, sl wyif, (k11, (sl wyif, k1) x 2 times, sl wyif) x 3 times, k15.

Row 19: Using DC yarn, sl, k14, ((sl wyib, k1) x 2 times, sl wyib, k11) x 3 times, (sl wyib, k1) x 2 times, sl wyib, k15.

Row 20: Using DC yarn, sl, k14, (sl wyif, k1) x 2 times, sl wyif, (k11, (sl wyif, k1) x 2 times, sl wyif) x 3 times, k15.

Row 21: Using LC yarn, k15, ((sl wyib, k1) x 2, sl wyib, k11) x 3 times, (sl wyib, k1) x 2, sl, k15.

Row 22: Using LC yarn, repeat row 18.

Rows 23-24: Using DC yarn, sl, k82. (83 sts)

Rows 25-26: Using LC yarn, sl, k82. (83 sts)

Rows 27-28: Using DC yarn, sl, k82. (83 sts)

Repeat rows 13-28 twenty two (22) more times or to desired length.

Repeat rows 13-20 one more time.

Repeat rows 1-4 three (3) more times.

Bind off.

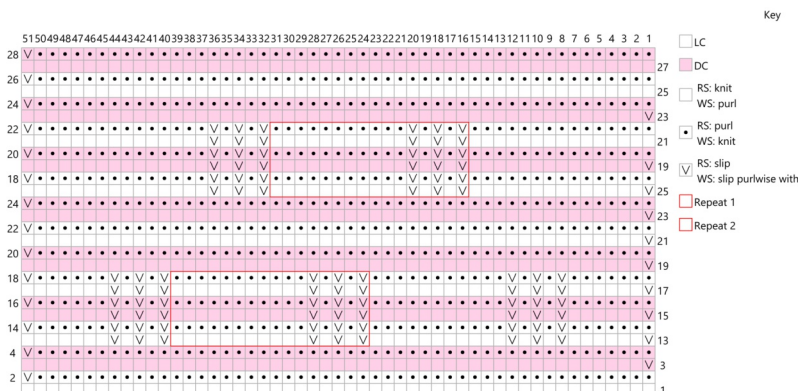
Finishing:

Weave in all yarn ends. Block.



What do you get if you cross a sheep with a porcupine?

An animal that knits its own sweaters.



Summer Meadow Motif Shawl

Difficulty level: ** Easy Free Shawl Crochet Pattern

Size: width - 100" (250 cm), depth - 48" (120 cm)

Materials: fingering weight yarn (75% wool, 25% nylon), 191 yards (175 meters) / 50 gr, color A – 11 balls (MC) = 2,101yds;

fingering weight 100% wool yarn 231 yds (210 m)/ 50 g color B– 1.5 balls (CC) = 346.5 yds

Hook: F (3.75 mm)

Gauge is not important

Abbreviations: ch = chain; st(s) = stitch(es); sl st = slip stitch; sc = single crochet; hdc – half double crochet; dc = double crochet; tr – treble crochet; 2dccl - 2 dc cluster; 3dccl - 3 dc cluster; MC – main color; CC – contrasting color

Square Motif

Rounds 1-4 in CC

Round 1: chain 8, join with sl st to make a ring.

Round 2: ch 1 (counts as 1 sc), 11 sc, sl st to ch 1.

Round 3: ch 5 (counts as 1 dc and ch 2), *1 dc in next sc, ch 2, repeat from * 11 times, sl st to ch-5.

Round 4: ch 3, 2dccl into top of ch-5, ch 5, *(3dccl into next ch-2, ch 3) 2 times, 3dccl into next ch-2, ch 5, repeat from *2 more times, 3dccl into next ch-2, ch 3, 3dccl into next ch-2, ch 1, 1 hdc into top of ch-3.

Rounds 5-12 in MC

Round 5: attach MC yarn, ch 5, *(3 dc, ch 3, 3 dc) into next ch-5, ch 4, 1 sc into next ch-3, ch 5, 1 sc into next ch-3, ch 4, repeat from * 2 more times, (3 dc, ch 3, 3 dc) into next ch-5, ch 4, 1 sc into next ch-3, ch 2, 1 dc into bottom of ch-5.

Round 6: ch 6, 1 sc into next ch-5, ch 4 *(3 dc, ch 3, 3 dc) into next ch-3, ch 4, 1 sc into next ch-4, ch 5, 1 sc into next ch-5, ch 5, 1 sc into next ch-4, ch 4, repeat from * 2 more times, (3 dc, ch 3, 3 dc) into next ch-3, ch 4, 1 sc into next ch-4, ch 2, 1 dc into bottom of ch-6.

Round 7: ch 6, 1 sc into next ch-5, ch 5, 1 sc into next ch-4, ch 4, *(3 dc, ch 3, 3 dc) into next ch-3, ch 4, 1 sc into next ch-4, (ch 5, 1 sc into next ch-5) 2 times, ch 5, 1 sc into next ch-4, ch 4, repeat from * 2 more times, (3 dc, ch 3, 3 dc) into next ch-3, ch 4, 1 sc into next ch-4, ch 2, 1 dc into bottom of ch-6.

Round 8: ch 6, 1 sc into next ch-5, ch 5, 1 sc into next ch-5, ch 5, 1 sc into next ch-4, ch 4, *(3 dc, ch 3, 3 dc) into next ch-3, ch 4, 1 sc into next ch-4, (ch 5, 1 sc into next ch-5) 3 times, ch 5, 1 sc into next ch-4, ch 4, repeat from * 2 more times, (3 dc, ch 3, 3 dc) into next ch-3, ch 4, 1 sc into next ch-4, ch 2, 1 dc into bottom of ch-6.



Round 9: ch 6, 1 sc into next ch-5, (ch 5, 1 sc into next ch-5) 2 times, ch 5, 1 sc into next ch-4, ch 4, *(3 dc, ch 3, 3 dc) into next ch-3, ch 4, 1 sc into next ch-4, (ch 5, 1 sc into next ch-5) 4 times, ch 5, 1 sc into next ch-4, ch 4, repeat from * 2 more times, (3 dc, ch 3, 3 dc) into next ch-3, ch 4, 1 sc into next ch-4, ch 2, 1 dc into bottom of ch-6.

Round 10: ch 6, 1 sc into next ch-5, (ch 5, 1 sc into next ch-5) 3 times, ch 5, 1 sc into next ch-4, ch 4, *(3 dc, ch 3, 3 dc) into next ch-3, ch 4, 1 sc into next ch-4, (ch 5, 1 sc into next ch-5) 5 times, ch 5, 1 sc into next ch-4, ch 4, repeat from * 2 more times, (3 dc, ch 3, 3 dc) into next ch-3, ch 4, 1 sc into next ch-4, ch 2, 1 dc into bottom of ch-6.

Round 11: ch 6, 1 sc into next ch-5, (ch 5, 1 sc into next ch-5) 4 times, ch 5, 1 sc into next ch-4, ch 4, *(3 dc, ch 3, 3 dc) into next ch-3, ch 4, 1 sc into next ch-4, (ch 5, 1 sc into next ch-5) 6 times, ch 5, 1 sc into next ch-4, ch 4, repeat from * 2 more times, (3 dc, ch 3, 3 dc) into next ch-3, ch 4, 1 sc into next ch-4, ch 2, 1 dc into bottom of ch-6.

Round 12: ch 6, 1 sc into next ch-5, (ch 5, 1 sc into next ch-5) 5 times, ch 5, 1 sc into next ch-4, ch 4, *(3 dc, ch 3, 3 dc) into next ch-3, ch 4, 1 sc into next ch-4, (ch 5, 1 sc into next ch-5) 7 times, ch 5, 1 sc into next ch-4, ch 4, repeat from * 2 more times, (3 dc, ch 3, 3 dc) into next ch-3, ch 4, 1 sc into next ch-4, ch 2, 1 dc into bottom of ch-6. Tie off.

Of course I talk to myself when I crochet. Sometimes I need expert advice.

Alternate Round 12 (to connect to another motif): ch 6, 1 sc into next ch-5, (ch 5, 1 sc into next ch-5) 5 times, ch 5, 1 sc into next ch-4, ch 4, *(3 dc, ch 1, sl st to ch-3 of the other motif, ch 1, 3 dc) into next ch-3, ch 1, sl st to ch-4 of the other motif, ch 3, 1 sc into next ch-4, (ch 2, sl st to ch-5 of the other motif, ch 2, 1 sc into next ch-5) 7 times, ch 2, sl st to ch-5 of the other motif, ch 2, 1 sc into next ch-4, ch 1, sl st to ch-4 of the other motif, ch 2, repeat from * 2 more times, (3 dc, ch 1, sl st to ch-3 of the other motif, ch 1, 3 dc) into next ch-3, ch 4, 1 sc into next ch-4, ch 2, 1 dc into bottom of ch-6.

Triangle Motif

Rows 1-4 in CC

Rows 5-12 in MC

Round 1: chain 8, join with sl st to make a ring.

Row 2: ch 1 (counts as 1 sc), 6 sc. Turn.

Row 3: ch 6 (counts as 1 dc and ch 2), *1 dc in next sc, ch 2, repeat from * 5 times, 1 dc. Turn.

Row 4: ch 6, (3dccl into next ch-2, ch 3) 2 times, 3 dccl into next ch-2, ch 5, (3dccl into next ch-2, ch 3) 3 times, 1 tr. Turn.

Row 5: attach MC yarn, ch 6, 3 dc into next ch-3, ch 4, 1 sc into next ch-3, ch 5, 1 sc into next ch-3, ch 4, (3 dc, ch 3, 3 dc) into next ch-5, ch-4, 1 sc into next ch-3, ch 5, 1 sc into next ch-3, ch 4, 3 dc into next ch-6, ch 3, 1 tr. Turn.

Row 6: ch 6, 3 dc into next ch-3, ch 4, 1 sc into next ch-4, ch 5, 1 sc into next ch-5, ch 5, 1 sc into next ch-4, ch 4, (3 dc, ch 3, 3 dc) into next ch-3, ch-4, 1 sc into next ch-4, ch 5, 1 sc into next ch-5, ch 5, 1 sc into next ch-4, ch 4, 3 dc into next ch-6, ch 3, 1 tr. Turn.

Row 7: ch 6, 3 dc into next ch-3, ch 4, 1 sc into next ch-4, (ch 5, 1 sc into next ch-5) 2 times, ch 5, 1 sc into next ch-4, ch 4, (3 dc, ch 3, 3 dc) into next ch-3, ch-4, 1 sc into next ch-4, (ch 5, 1 sc into next ch-5) 2 times, ch 5, 1 sc into next ch-4, ch 4, 3 dc into next ch-6, ch 3, 1 tr. Turn.

Row 8: ch 6, 3 dc into next ch-3, ch 4, 1 sc into next ch-4, (ch 5, 1 sc into next ch-5) 3 times, ch 5, 1 sc into next ch-4, ch 4, (3 dc, ch 3, 3 dc) into next ch-3, ch-4, 1 sc into next ch-4, (ch 5, 1 sc into next ch-5) 3 times, ch 5, 1 sc into next ch-4, ch 4, 3 dc into next ch-6, ch 3, 1 tr. Turn.

Row 9: ch 6, 3 dc into next ch-3, ch 4, 1 sc into next ch-4, (ch 5, 1 sc into next ch-5) 4 times, ch 5, 1 sc into next ch-4, ch 4, (3 dc, ch 3, 3 dc) into next ch-3, ch-4, 1 sc into next ch-4, (ch 5, 1 sc into next ch-5) 4 times, ch 5, 1 sc into next ch-4, ch 4, 3 dc into next ch-6, ch 3, 1 tr. Turn.

Row 10: ch 6, 3 dc into next ch-3, ch 4, 1 sc into next ch-4, (ch 5, 1 sc into next ch-5) 5 times, ch 5, 1 sc into next ch-4, ch 4, (3 dc, ch 3, 3 dc) into next ch-3, ch-4, 1 sc into next ch-4, (ch 5, 1 sc into next ch-5) 5 times, ch 5, 1 sc into next ch-4, ch 4, 3 dc into next ch-6, ch 3, 1 tr. Turn.

Row 11: ch 6, 3 dc into next ch-3, ch 4, 1 sc into next ch-4, (ch 5, 1 sc into next ch-5) 6 times, ch 5, 1 sc into next ch-4, ch 4, (3 dc, ch 3, 3 dc) into next ch-3, ch-4, 1 sc into next ch-4, (ch 5, 1 sc into next ch-5) 6 times, ch 5, 1 sc into next ch-4, ch 4, 3 dc into next ch-6, ch 3, 1 tr. Turn.

Row 12: ch 4, sl st to ch-5 of the other motif, ch 1, 3 dc into next ch-3, ch 1, sl st to ch-4 of the other motif, ch 2, 1 sc into next ch-4, (ch 2, sl st to ch-5 of the other motif, ch 2, 1 sc into next ch-5) 7 times, ch 2, sl st to ch-5 of the other motif, ch 2, 1 sc into next ch-4, ch 2, sl st to ch-4 of the other motif, ch 1, (3 dc, ch 1, sl st to ch-3 of the other motif, ch 1, 3 dc) into next ch-3, ch 1, sl st to ch-4 of the other motif, ch 2, 1 sc into next ch-4, (ch 2, sl st to ch-5 of the other motif, ch 2, 1 sc into next ch-5) 7 times, ch 2, sl st to ch-5 of the other motif, ch 2, 1 sc into next ch-4, ch 2, sl st to ch-4 of the other motif, ch 1, 3 dc into next ch-6, ch 1, sl st to ch-3 of the other motif, ch 1, 1 tr.

Shawl

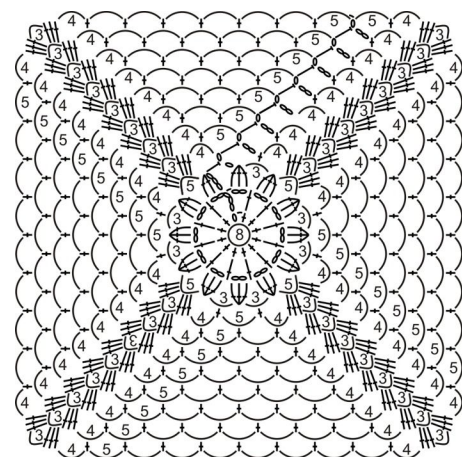
Crochet 36 square motifs and 9 triangle motifs. Connect motifs as-you-go using the alternate round 12 for square motifs. Crochet square motifs first, then crochet and connect triangle motifs as-you-go to the top edge of the shawl.

Finishing

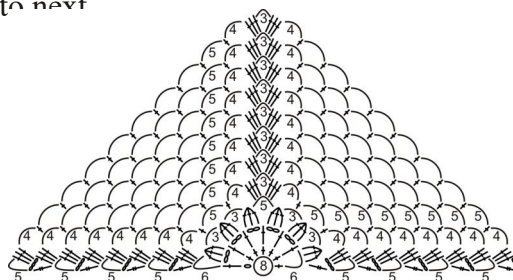
Work 1 row of sc along the top edge of the shawl.

Make fringe.

Block the shawl.



abe-knitting-patterns.com



abe-knitting-patterns.com