

Yarns 'n Prayers



St. Giles Prayer Shawl Ministry

News from the 4th Quarter, 2022

1- Do you know someone in need of our community's prayers?

You may not be able to make things to carry our prayers to those in need, but, if you know of someone who needs our prayers, you can get a shawl, blanket or other item from the Parish Center and give it to that person. If you can't physically do that, call the Parish Center with your information about where and to whom and why to send something and ask that it be passed to some one of us who can do it.

2- There is no charge for this

but donations of yarn, or money to buy yarn, are appreciated to carry on this ministry.

3- Do you knit or crochet or sew or weave and would you like to participate in this ministry?

We gather at the Parish Ministry Center on the second Monday of each month at 1 PM to bless and record new shawls and blankets, share patterns and ideas, and get yarn for new projects. Attendance is not required. You can join this ministry by making at least one shawl or lap blanket. If you need yarn to do this, you can get some from our stash. Send your contact info to Paul Joseph Schleitwiler, FCM to be added to the roster

4- Do you have a story to share about prayer shawls or blankets?

Or other things related to this ministry or the making of shawls and blankets? Did something in this newsletter inspire you to comment about it?

Share what you have to say by email to pjschleitwilerfcm@yahoo.com

What More Can I Do?

Your prayers for those who receive these tangible signs of our care and God's love are the heart of this ministry.

Page 2 - Who we are praying for

2023 Meeting Dates

4th Qtr 2022 statistics

We continue to grow

Page 3 - Knit Easy Eyelet Stitch Wrap

Page 4 - Allover Lace Triangular Crochet Shawl

Page 5 - Humor?

Yvonne Thank You

Blessing

Join the Prayer Shawl ministry.

It's like AA in some ways. We meet regularly to discuss how we have dealt with our addiction. We always have someone who will listen with sympathy and support who has shared our experience. We recognize fellow addicts and invite them to join us. But we are not trying to solve our addiction, just get rid of guilty feelings since it's for a good cause.

For the third time, a new group

has formed following our example. Mary Ellen Lesniak's daughter, Meg, in Burlingame, California has started a prayer shawl ministry with the school Mother's Club. Mary Ellen reported, "Meg has asked several times for me to send her a prayer shawl for someone she knew who needed that kind of support. The first was for her mother-in-law with cancer. Apparently the Mother's group has a mutual friend who is now in need, which prompted Meg to tell the group about our ministry. Someone in the group actually had a small blanket already made that she offered to share for this first recipient. I thought everyone would be pleased to know that their work is spreading."

This led to discussion about how we might support them. It was suggested we could put together a packet of info about our history and what works and host a Zoom meeting as we did with the group in Canada.

Mary Ellen said, "Great idea about putting together a packet. This is a group of moms who, my guess, are zoomed out. They have gone through two years or more of scheduling zoom meetings for themselves and their children. I believe what my daughter would like is a packet of prayers and some information. I would like to send the link to (our) news letter, measurements for shawls, and prayers along with picture of the labels."

Annette Hulefeld offered, "I have a perfect light colored shawl that would be very appropriate to send as a welcome gift to this new group starting up. I'd be very happy to send it on behalf of all of us along with prayer card and pattern." They have sent two prayer shawls to women dealing with cancer. The prayer shawl that Annette sent was also sent to a woman who lost her husband.

As Mary Ellen suggested, we have added this group to our prayer list. May their efforts be as successful and rewarding as ours have been.

Who Else Are We Praying For

A parishioner being treated for breast cancer
A woman whose 4-year-old child has cancer
A woman whose brother died
A woman whose uncle died
A nun on kidney dialysis
A woman whose fiance died
A woman whose grandson is having surgery
A woman whose mother-in-law died
A woman parishioner for a friend with cancer
Immigrants at the Texas/Mexico border
A new prayer shawl ministry with the school Mother's Club in California started by Mary Ellen Lesniak's daughter
Five friends of the daughter of one of our crafters. All have graduated from college and in their first apartments with new jobs
A woman who had a heart attack
A woman with chronic illness
An ill child of a parishioner
Another woman with chronic illness
A person in a retirement home who needs prayers
A woman whose sister died
A woman parishioner who is ill
A woman and her daughter whose husband and father died
A woman with back pain
A woman with cancer
A man undergoing dialysis three times per week
A parishioner who was hit while riding a bike
An asylum seeker
A woman getting a liver transplant
Three veterans in hospice
Two more vetrans in hospital
Partners of the St Catherine St Lucy Faith and Fellowshio group
A woman whose premature baby died
Another woman and her daughter whose husband and father died
A man whose wife is very sick
Two more women with cancer
A man having heart surgery
A man with cancer
Another woman with cancer
A parishioner's Godmothe's daughter's mother-in-law who has cancer and will be going through very aggressive chemotherapy over the next few months.
A nun's sister-in-law whose husband has cancer
The niece of a crafter who has ALS
A woman in Florida for personal reasons

Prayer Shawl Ministry meeting dates in 2023

The 2nd Monday of each month

1st Qtr	Jan 9	Feb 13	Mar 13
2nd Qtr	Apr 10	May 8	Jun 12
3rd Qtr	Jul 10	Aug 14	Sep 11
4th Qtr	Oct 9	Nov 13	Dec 11

To confirm a particular meeting date, contact
Paul Joseph Schleitwiler, FCM at pjschleitwilerfcm@yahoo.com

Statistics for the Quarter

Crafters made 45 shawls, 5 blankets and many blessing squares, hats, scarves and mittens this quarter. People in need of our prayers received 23 shawls, 6 blankets, all the hats, scarves and mittens and many blessing squares.

The total number of people reached by our prayers and for whom we continue to pray keeps growing. The thanks we have received show how our prayers have been welcomed. Even those who do not make something add their prayers to this ministry we all share.

We continue to grow

Three new crafters joined the Prayer Shawl ministry in December bringing the number of regulars up to thirty-nine. There are also about another dozen who contribute but have not formally joined. If you knit, crochet, sew or weave, you can help make comforting items to carry the prayers of the whole church to those in need of them.

Crabby Road

8-22-08



When you have finished a project, the leftover yarn can be used to make blessing squares.

KNIT EASY EYELET STITCH WRAP

KNIT SKILL LEVEL: **BEGINNER**

Julia Madill
Designer

MATERIALS

Yarn (3.5 oz/100 g; 155 yds/142 m) **7 balls**
Size U.S. 10 (6 mm) circular knitting needle 29" [73.5 cm] long **or size needed to obtain gauge.**

ABBREVIATIONS

Approx = Approximately	K2tog = Knit next 2 stitches together	St(s) = Stitch(es)
Beg = Beginning	Pat = Pattern	Yo = Yarn over
K = Knit	Rep = Repeat	

MEASUREMENTS

Approx 24 x 70" [61 x 178 cm].

GAUGE

15 sts and 30 rows = 4" [10 cm] in
Easy Eyelet Pat.

INSTRUCTIONS

Note: Wrap is reversible. There is
no right or wrong side.

Cast on 91 stitches (sts) (multiple
of 3 sts + 16). **Do not** join. Working
back and forth across needle in
rows, proceed as follows:
Knit 16 rows (garter st).

Next row: Knit 8 (K8). *K1. Yarn over
(yo). Knit next 2 stitches together
(K2tog). Repeat (Rep) from * to last
8 sts. K8.

Rep last row for Easy Eyelet Pat
until work from beginning (beg)
measures 68" [173 cm].

Knit 16 rows (garter st).
Cast off.

FINISHING

Pin Wrap to measurements on a f at
surface. Cover with a damp cloth,
leaving cloth to dry.



ALLOVER LACE TRIANGULAR CROCHET SHAWL

4

CROCHET I SKILL LEVEL: EASY

MATERIALS

Yarn (5.29 oz/150 g; 561 yds/513 m) **1 ball**

Size U.S. H/8 (5 mm) crochet hook **or size needed to obtain gauge.**
2 stitch markers.

ABBREVIATIONS

Approx = Approximately

Beg = Beginning

Ch = Chain(s)

Dc = Double crochet

Hdc = Half double crochet

Picot = Ch 3. Sl st in 3rd ch from hook

PM = Place Marker

Rep = Repeat

RS = Right side

Sc = Single crochet

Shell = (3 tr. Ch 1. 3 tr) in indicated stitch

Sl st = Slip stitch

Sp(s) = Space(s)

St(s) = Stitch(es)

Tr = Treble crochet

Yoh = Yarn over hook

MEASUREMENTS

Approx 56" [142 cm] wide x 35" [89 cm] deep.

GAUGE

15 sc and 16 rows = 4" [10 cm].

INSTRUCTIONS

Ch 4. Join with sl st to form a ring. See diagram on page 2.

1st row: (WS). Ch 7 (counts as tr and ch 3). (1 dc. Ch 3. 1 tr) in ring. Turn.

2nd row: Ch 7 (counts as tr and ch 3). Shell in next ch-3 sp. Ch 2. 1 dc in next dc. PM on just made dc for center of shawl. Ch 2. Shell in last ch-7 sp. Ch 3. 1 tr in 4th ch of same ch 7. Turn.

5th row: Ch 7 (counts as tr and ch 3). 1 dc in f rst ch-3 sp. *Ch 3. 1 sc in top of next shell. Ch 3.** (1 dc. Ch 3. 1 dc) in next ch-5 sp. Rep from * to ** once more.* (1 dc. Ch 3. 1 dc) in center dc. Rep from * to * once more. 1 dc in last ch-7 sp. Ch 3. 1 tr in 4th ch of same ch 7. Turn.

6th row: Ch 7 (counts as tr and ch 3). Shell in f rst ch-3 sp. *Ch 1. 1 sc in next ch-3 sp. Ch 5. 1 sc in next ch-3 sp.** Ch 1. Shell in next ch-3 sp. Rep from * to ** once more.* Ch 1. (Shell. Ch 2. 1 dc. Ch 2. Shell) in next center ch-3 sp. Rep from * to * once more. Ch 1. Shell in last ch-7 sp. Ch 3. 1 tr in 4th ch of same ch 7. Turn.

7th row: Ch 7 (counts as tr and ch 3). 1 dc in f rst ch-3 sp. *Ch 3. 1 sc in top of next shell. Ch 3. (1 dc. Ch 3. 1 dc) in next ch-5 sp.* Rep from * to * to center group of (Shell, ch 2, dc, ch 2, Shell). Ch 3. 1 sc in top of next shell. Ch 3. (1 dc. Ch 3. 1 dc) in center dc. Rep from * to * to last Shell. Ch 3. 1 sc in top of next shell. Ch 3. 1 dc in last ch-7 sp. Ch 3. 1 tr in 4th ch of same ch 7. Turn.

3rd row: Ch 7 (counts as tr and ch 3). 1 dc in f rst ch-3 sp. Ch 3. 1 sc in top (ch-1 sp) of next shell. Ch 3. (1 dc. Ch 3. 1 dc) in center dc. Move marker on just made ch-3 sp for center of shawl. Ch 3. 1 sc in top (ch-1 sp) of next shell. Ch 3. 1 dc in last ch-7 sp. Ch 3. 1 tr in 4th ch of same ch 7. Turn.

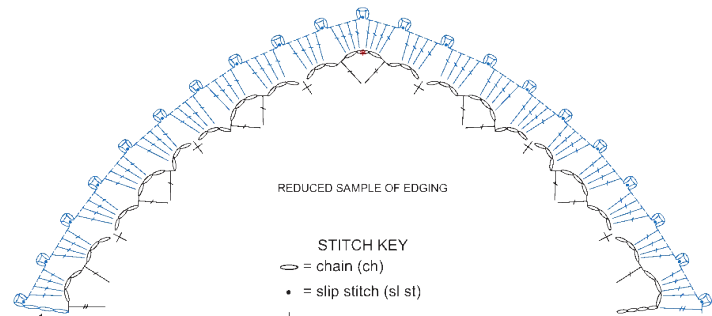
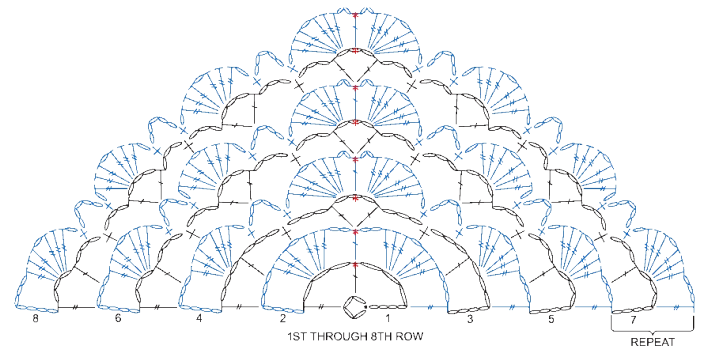
4th row: Ch 7 (counts as tr and ch 3). Shell in f rst ch-3 sp. *Ch 1. 1 sc in next ch-3 sp. Ch 5. 1 sc in next ch-3 sp.* Ch 1. (Shell. Ch 2. 1 dc. Ch 2. Shell) in center ch-3 sp. Rep from * to * once more. Ch 1. Shell in last ch-7 sp. Ch 3. 1 tr in 4th ch of same ch 7. Turn.

8th row: Ch 7 (counts as tr and ch 3). Shell in f rst ch-3 sp. *Ch 1. 1 sc in next ch-3 sp. Ch 5. 1 sc in next ch-3 sp. Ch 1. Shell in next ch-3 sp.* Rep from * to * to 2 ch-3 sps before center ch-3 sp. Ch 1. 1 sc in next ch-3 sp. Ch 5. 1 sc in next ch-3 sp. Ch 1. (Shell. Ch 2. 1 dc. Ch 2. Shell) in center ch-3 sp. Rep from * to * to las 2 ch-3 sp and ch 7. Ch 1. 1 sc in next ch-3 sp. Ch 5. 1 sc in next ch-3 sp. Ch 1. Shell in last ch-7 sp. Ch 3. 1 tr in 4th ch of same ch 7. Turn.

Rep 7th and 8th rows until Shawl along center line measures approx 35" [89 cm], ending on 7th row.

Edging

1st row: (RS). Ch 6. Sl st in 3rd ch from hook (counts as dc and picot). *4 dc in next ch-3 sp. Picot.* Rep from * to * to center ch-3 sp. (4 dc. Picot) twice in center ch-3 sp. Rep from * to * to last ch-7. 4 dc Picot in last ch 7. 1 dc in 4th ch of same ch 7. Fasten of .



STITCH KEY

- = chain (ch)
- = slip stitch (sl st)
- † = single crochet (sc)
- ⌋ = double crochet (dc)
- ⌋ = treble crochet (tr)

= shell

= picot

* = marker

GIVE IN TO YOUR FEELINGS



CRAFT SOMETHING PRETTY

Chop sticks are good as knitting needles.

Dear Agnes

"Thank you" is probably
something you hear all the time,
but today when I say those two words,
just know I mean them...
more than you know.

*After returning from the death of my
sister, and being greeted with such
a beautiful shawl, I was overjoyed.
to see that it was made by you.
I will cherish it forever.
Thank you for your love
and caring at all times, and my
gratitude to STANES PRAYER SHAWL
MINISTRY, for their continued love
and caring.*

*Sincerely
Yvonne*

Find inner peace with crochet

A husband and wife had been married for 60 years and had no secrets except for one. The woman kept in her closet a shoe box that she forbade her husband from ever opening. But when she was on her deathbed—and with her blessing—he opened the box and found a crocheted doll and \$95,000 in cash.

"My mother told me that the secret to a happy marriage was to never argue," she explained. "Instead, I should keep quiet and crochet a doll."

Her husband was touched. Only one doll was in the box—that meant she'd been angry with him only once in 60 years. "But what about all this money?" he asked. "Oh," she said, "that's the money I made from selling the dolls."

Our Blessing for Shawls and Lap Blankets

(adapted from Janet Severi Bristow - 2000)

May God's grace be upon these shawls and blankets ...
warming, comforting, enfolding and embracing.

May these mantles be a safe haven ...

a sacred place of security and well being ...

sustaining and embracing in good times as well as difficult ones.

May those who receive these shawls and blankets be cradled in hope,
kept in joy, graced with peace,
and wrapped in love.

Blessed be!